

# prismERP

*think global, be local*



bringing your business  
at your fingertips

[www.prismerp.net](http://www.prismerp.net)

Financial

Sales & Distribution

Customer Relationship

Supply Chain

Human Resource

Manufacturing

Asset

## INDUSTRIES

ONE SOLUTION - ALL INDUSTRIES

SERVICE

ON DEMAND  
RECURRING  
UTILITY

TRADING

WHOLESALER  
RETAILER  
DISTRIBUTOR

MANUFACTURING

PROCESS  
DISCRETE  
JOB SHOP



GOVERNMENT

REVENUE  
CITIZEN SERVICE  
ADMINISTRATION

PrismERP is a platform independent, ready and integrated ERP system for multi-dimensional businesses mostly used as a "business in a box". Built-in process and robust architecture of PrismERP covers small to large business and ensure profits through productivity.

**E**nterprise  
**R**esource  
**P**lanning

## Benefits



### NATIVE SUPPORT & FLEXIBLE UI

Highly intuitive UI and native support facility help users to adopt PrismERP quickly & efficiently

### MOBILITY & FLEXIBILITY

Specialized mobile applications and web based access makes data readily available to users



### INTEGRATION & INTEROPERABILITY

Web/e-Commerce, Attendance/IoT/Control Devices, PoS, VAT software and any external application can be integrated with PrismERP API

### SECURITY & COMPLIANCE

Data is kept secure with built-in protections two factor authentication, dynamic user access management, time/IP restriction, active directory support



### DATA BACKUP & RECOVERY

Diverse disaster recovery is achieved through automated backup to cloud server or to failover clusters which ensures 100% data safe

### VERSATILE LICENSING & PRICING MODEL

Dynamic pricing and licensing infrastructure enables users to match & select functionalities according to business needs and budget in each process area



### CUSTOMIZATIONS FOR UNIQUE BUSINESS

When out of the box functionality is not enough, PrismERP offers highly skilled team to meet unique business requirements

### FLEXIBLE DEPLOYMENT CHOICES

### 15+ YEARS OF IMPLEMENTATION EXPERIENCE

15+ years of implementation success stories achieved through carefully tailored implementation plan for each individual business

#### HOSTING

ON PREMISE CLOUD  
SHARED SERVER  
DEDICATED SERVER

#### PLATFORM



#### DATABASE

MSSQL ORACLE  
MYSQL POSTGRES

#### PLANNING

Project planning & kickoff meeting ensure that both organizations are on the same page for the project

#### DEPLOYMENT

System commissioning, preparation, installation, PrismERP setup & configuration with foundation training

#### PREPARATION

Data preparation and migration define cutover, integrated CRP testing

#### HYPERCARE

Fine tuning and extensive support on post go live period ensures successful implementation



#### BLUEPRINT

Business process modeling to determine how to best use different modules and define user roles

#### REALIZATION

Design, development, integration & testing for customized features, functional CRP testing

#### GO LIVE

End user training, user acceptance testing, phased rollout & system cutover

#### SUPPORT

After successful implementation, robust support system is activated



# Modules

## Financial Accounting

- GL** General Ledger
- AP** Accounts Payable
- AR** Accounts Receivable
- PM** Party Management
- BL** Branch Ledger
- MC** Multi Currency
- SL** Finer Transaction Control  
Voucher approval, Ledger Restrictions
- CM** Cheque Management  
Bulk Cheque Issue & receive with printing facility
- ET** Expense Tracking
- CB** Cashbook & Bankbook  
Petty cash management & easy bank reconciliation

## Managerial Accounting

- CB** Financial Budget
- MD** Managerial Dashboard  
Organization KPI at your fingertips
- TM** Treasury Management  
Fund planning

## Cost Accounting

- CC** Cost Center
- DD** Cost Analysis

## Project System

- PA** Project Accounting
- PS** Project Sales
- PI** Project Inventory
- PT** Project Tasks
- PS** Project Services

## BI Tools

Comprehensive BI Tools facilitating reporting & analytics

- RD** Report Designer
- PN** Push Notification
- DB** Dashboard
- EA** SMS, Email Alert

## Administrative Tools

- CB** Cloud Backup  
Hassle free automated backup
- CA** Central Authentication  
Login once - access multiple apps  
Supports Active Directory, oAuth

## Routing & BoM

- ROU** Routing Configuration  
Dynamic multi step production configuration
- BOM** Bill of Material  
Pre defined bill of material for Product, fine tuned for order

## Shop Floor Control

- SFC** Shop Floor Control  
Supervise & monitor your production activities
- MA** Manufacturing Accounting  
Automated financial accounting regarding production
- WSM** Wastage Management
- SFD** Lot Tracability

## Scheduling & Planning

- MPS** Master Production Schedule
- MRP** Material Requirement Planning
- DF** Demand Forecasting

## Warranty Management

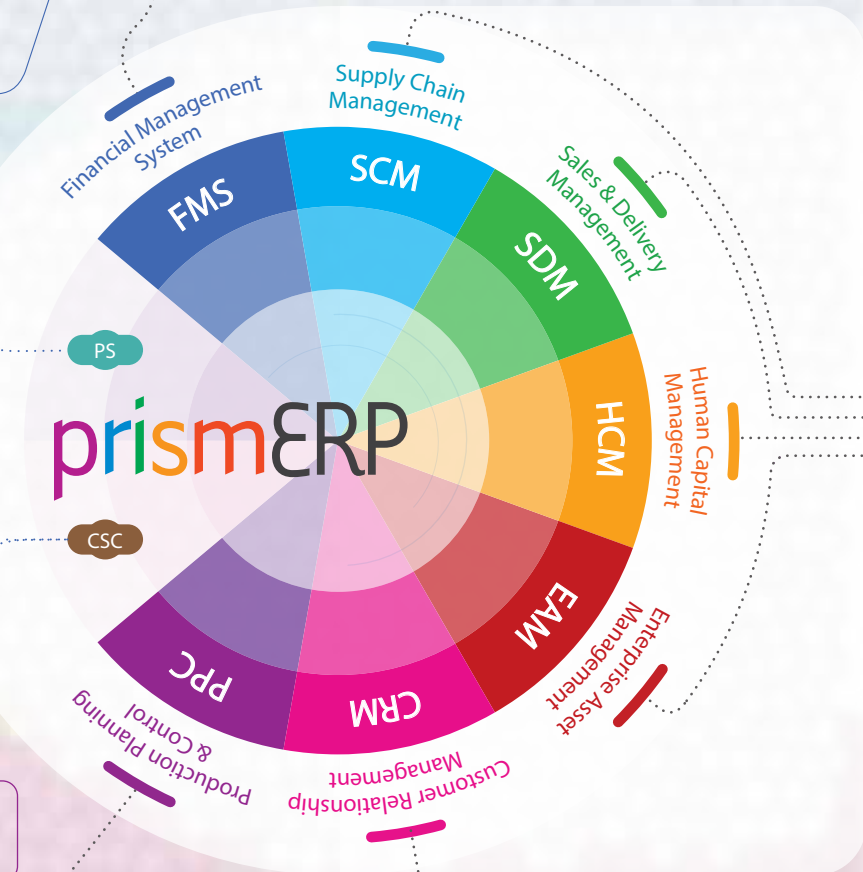
- RMA** Return Merchandise Authorization
- RS** Repair Servicing
- TPW** Third Party Servicing

## Sales CRM

- CM** Campaign Management
- LM** Lead Management
- ACT** Activity Management
- QTM** Quotation Management
- SVY** Survey Management
- BM** Booking Management

## Service Billing

- SM** Subscriber Management  
Package & Contract mangement with upgrade, downgrade
- AB** Automated Billing  
Periodic automated invoice generation & notification for partial or full service
- SSB** Segmented Service Billing  
Project based or unit based seggregated billing system
- API** Service Event API
- AB** Automated Bill Payment



### Inventory & Warehouse

- IC** Inventory Control  
Inventory with integrated automated accounting system
- LOM** Batch/Lot Management  
Lot or batch for backtracking
- PB** Product Booking  
Booking for production or sales

### Purchase Warranty

- PWT** Purchase Warranty  
Manage & Maintain Warranty Services for Purchases

### Procurement Process

- PRQ** Product Requisition
- PRE** Purchase Request
- SCA** Supply Chain Analysis
- PQC** Purchase Quality Control
- QTC** Quotation Comparison

### Purchase Billing & Delivery

- PI** Purchase Invoice
- PWO** Purchase Order
- PC** Purchase Cancellation  
Partial of full Debit Note
- GRN** Goods Receive Note
- SRL** Serial Management  
Maintain product serials for Purchase Invoices/Orders

### Foreign Purchase

- LCI** Purchase LC  
Import LC, Back to Back LC with CI, PI, Currency fluctuation

### Sales force Automation

- SP** Sales Planning
- SC** Sales Commission

### Foreign Sales

- LM** LC Management  
Export LC Documents, CI, PI, Cnf & Other Expenses, Shipment, Auto Inventory & Currency Fluctuation
- BL** Business Loan Integration

### Product Price Control

- PPD** Promotion & Discount  
Promotional offers (free items) Special periodic discounts
- PP** Periodic Pricing  
Time, Customer category Area based pricing control

### In Store Product Processing

- IST** InStore Processing  
Manage breakdown or Processing of Products in Inventory
- ASM** Bundle Product

### Distribution Management

- DC** Sales & Commission
- DI** Distributor Inventory
- DD** Distributor Demands

### Order Management

- SWO** Order Management
- CC** Credit Control  
Control & monitor credit limits

### Sale Delivery Management

- SDC** Sale Delivery Challan
- DPL** Delivery Packing List
- SHP** Shipment Schedule
- VIM** Vessel Information

### Sales Management

- SIHV** High Volume Sales Invoice  
Data caching and processing optimizations for 20k invoices /day
- SSR** Sales Product Serial  
Set and maintain serials numbers to Products for Sale
- BCH** Batch/Lot based Sales
- EXP** Expiry Date based Sales
- CSM** Color, size based Sales
- HP** Hire Purchase (EMI)
- SI** Sales Invoice
- SC** Sales Cancellation
- VAR** Dynamic Product Subdivision

### Fund & Gratuity

- PFM** Provident Fund Management
- PFL** PF Loan
- GR** Gratuity
- PFA** PF Accounting  
Manage a disparate Lapse Fund in sync with PF

### Employee Portal

- EMP** Employee Portal  
Organise a view personal information regarding the services

### Leave Management System

- LMS** Leave Management  
Configurable holiday & leave policy with leave accumulation, carry forward, partial leave, multi layer approval
- LE** Leave Encashment
- ML** Maternity Leave

### Time and Attendance

- DA** Daily Attendance
- LOM** Late & Overtime
- SM** Shift Management
- SS** Shift Roster & Swap
- EM** Employee Movement  
Real time activities of employees
- DI** Device Integration  
Provision of device Integration with PrismERP

### Payroll

- PRS** Salary Processing
- PRM** Monthly Allowance
- EL** Loan and Advance
- PRP** Bank Payment Processing
- EIT** Employee Income Tax

### Recruitment

- PIM** Recruitment
- ESP** Candidate Evaluation

### Training Management

- TRS** Training Schedule
- TRA** Cost Management
- TRC** Training Activities

### Asset Register & Tracking

- ASM** Asset Register & Tracking
- BP** Barcode / Label Printing

### Employee Management

- PIM** Personal Information Management
- IDC** ID Card Management
- PRF** Performance Appraisal
- ESP** Employee Separation  
Final Settlement with Provident Fund, Loan Settlement, Asset Handover & exit clearance

### Fixed Asset Accounting

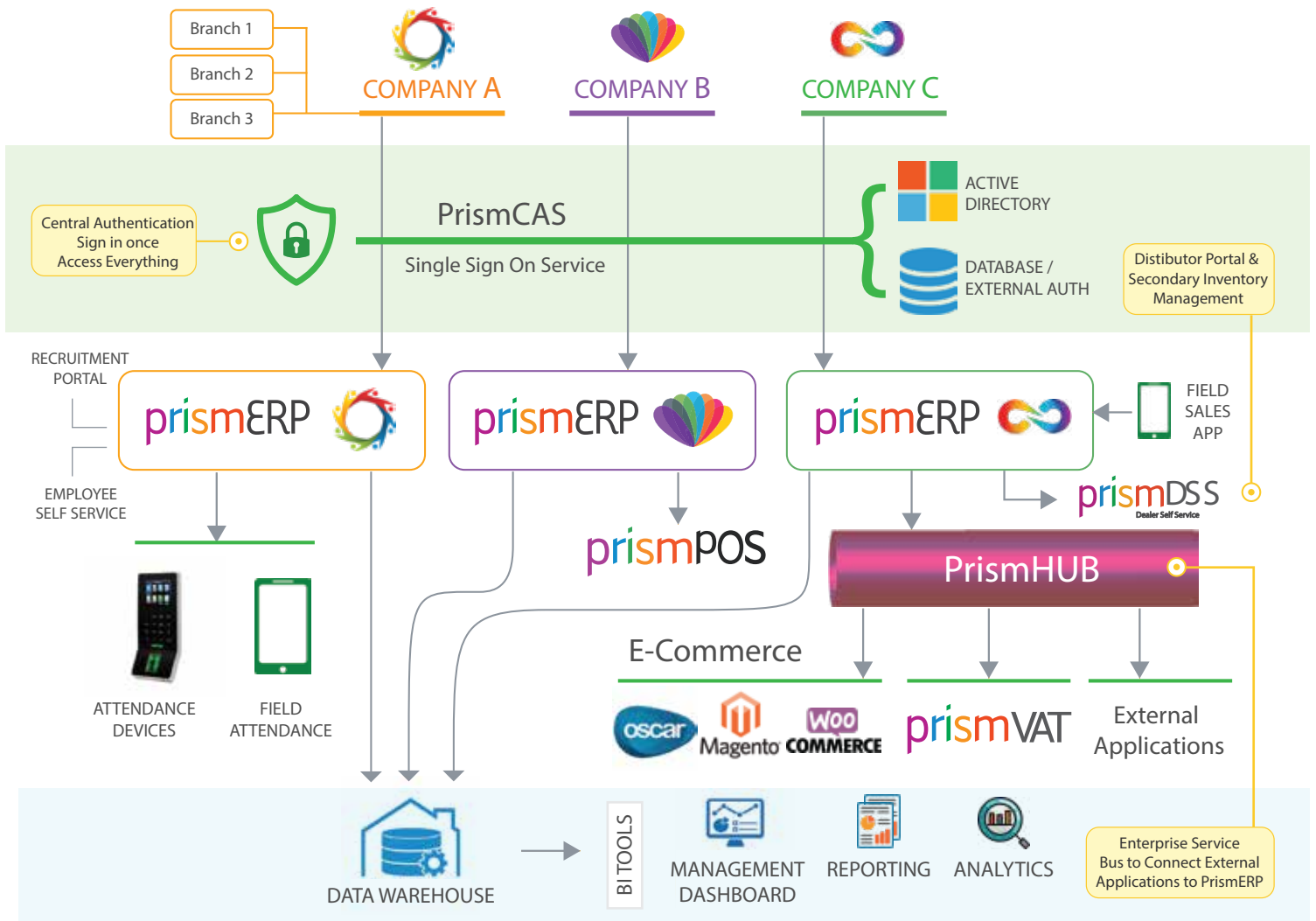
- AAC** Asset Accounting
- ADV** Asset Depreciation & Valuation
- AMB** Branchwise Asset Depreciation

### Maintenance Management

- AEM** Asset Expense Management
- PM** Plant Maintenance
- VM** Vehicle Maintenance
- ARM** Asset Requisition Management

# Solution Architecture

The architecture of PrismERP provides comprehensive interoperability and drill-down capability to manage system complexity in order to provide scalability and flexibility.



## INDUSTRIES

Robust Business Solution to a Wide Spectrum of Industries

Power & Energy	Agro	Retail	NGO/NPO
Public Companies	Technology	Electronics	Telecom
Steel & Aluminium	Buying House	Supply Chain	eCommerce
RMG	Tiles & Ceramic	Foods & Beverages	Service Industry
Financial Services	Distribution	Automotive	Manufacturing

## PRICING

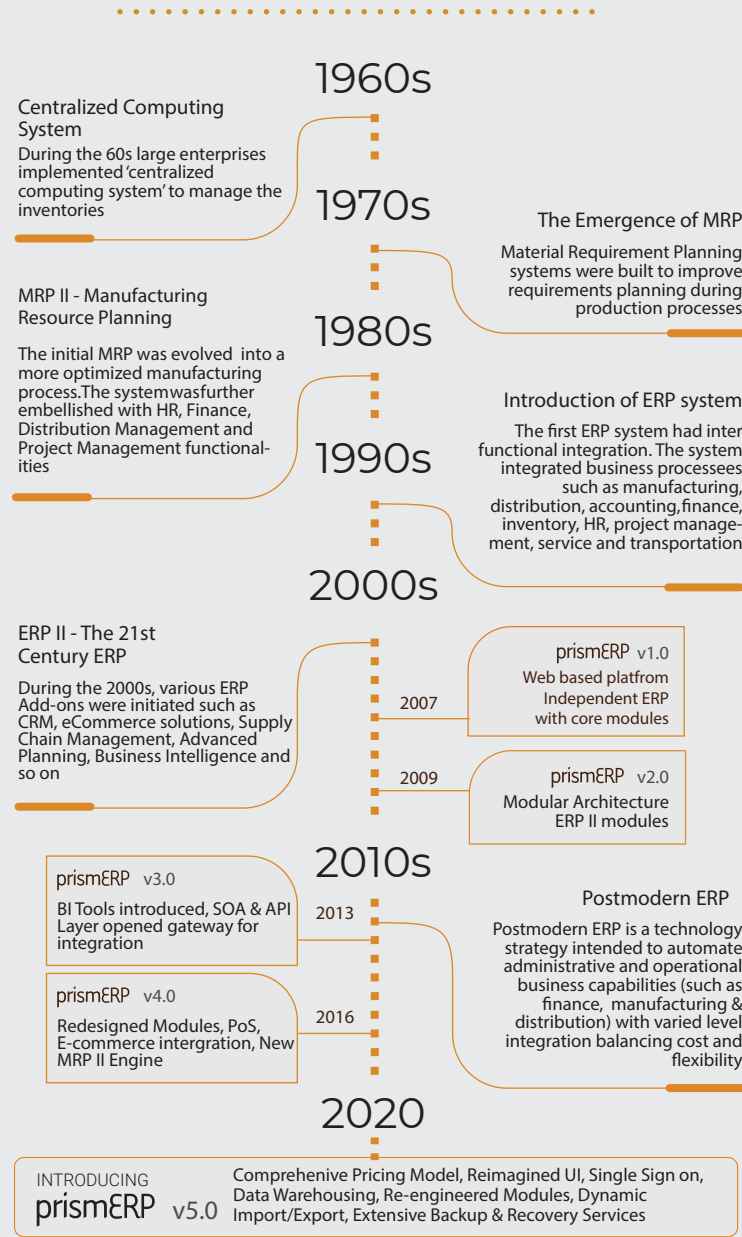


[store.divineit.net](http://store.divineit.net)



# The History of ERP & PrismERP

ERP systems were not always readily available for Small & Medium Enterprises. Only large enterprises could afford the expensive legacy systems which could only manage the inventories and manufacturing requirements. Since then ERP systems has gone through many developments and additions. Let's take a look at the evolution of the ERP system...



# About Divine IT Limited

Divine IT Limited is an award winning software and IT consultancy firm, solely dedicated to improving businesses across the globe, through Innovation and originality, since 2005. With a fortified team of ingenious tech-wizards, Divine IT Limited leaves no stones unturned in providing the most dynamic solutions catered to all types of client.

Divine IT Limited takes pride in assisting companies with their robust ERP system in Bangladesh and around the world. The company serves by the principle 'Customer, Commitment, Technology' and is positioned at the forefront of rendering high quality IT solutions to its client.

## PrismERP - Transforming the business



More Products by Divine IT



**DIVINE IT LIMITED**  
Customer. Commitment. Technology.

+88 01730071001  
+8802 9632207-08  
office@divineit.net  
www.divineit.net

**HEAD OFFICE**  
F. Haque Tower (Level 7)  
107, Bir Uttam C.R Datta Road  
Dhaka-1205, Bangladesh

**STP**  
H 29, R 12, S 10  
Uttara, Dhaka 1230  
Bangladesh

**CHITTAGONG OFFICE**  
124 Sheikh Mujib Road  
Agrabad Chowmuhuni, Agrabad  
Chittagong 4100, Bangladesh

**BUSINESS INQUIRIES**  
 **16517**  
www.divineit.net

**MEMBERS**



**ENLISTED BY**



**CERTIFICATIONS**

